

# Exhibit A: Existing Conditions

## Resolution 23-07-35

1. 1986 light rail substation due for upgrade
2. Existing bus facilities (no layover)
3. Existing stair/ ramp due for upgrade/ accessibility improvements
4. PBOT paper street used primarily for bus, ped, bike circulation
5. Betterment opportunity for safety improvements of adjacent roadway
6. Existing easement to Target for driveway access
7. ODOT Pedestrian Bridge to MAX platform and Laurelhurst Neighborhood



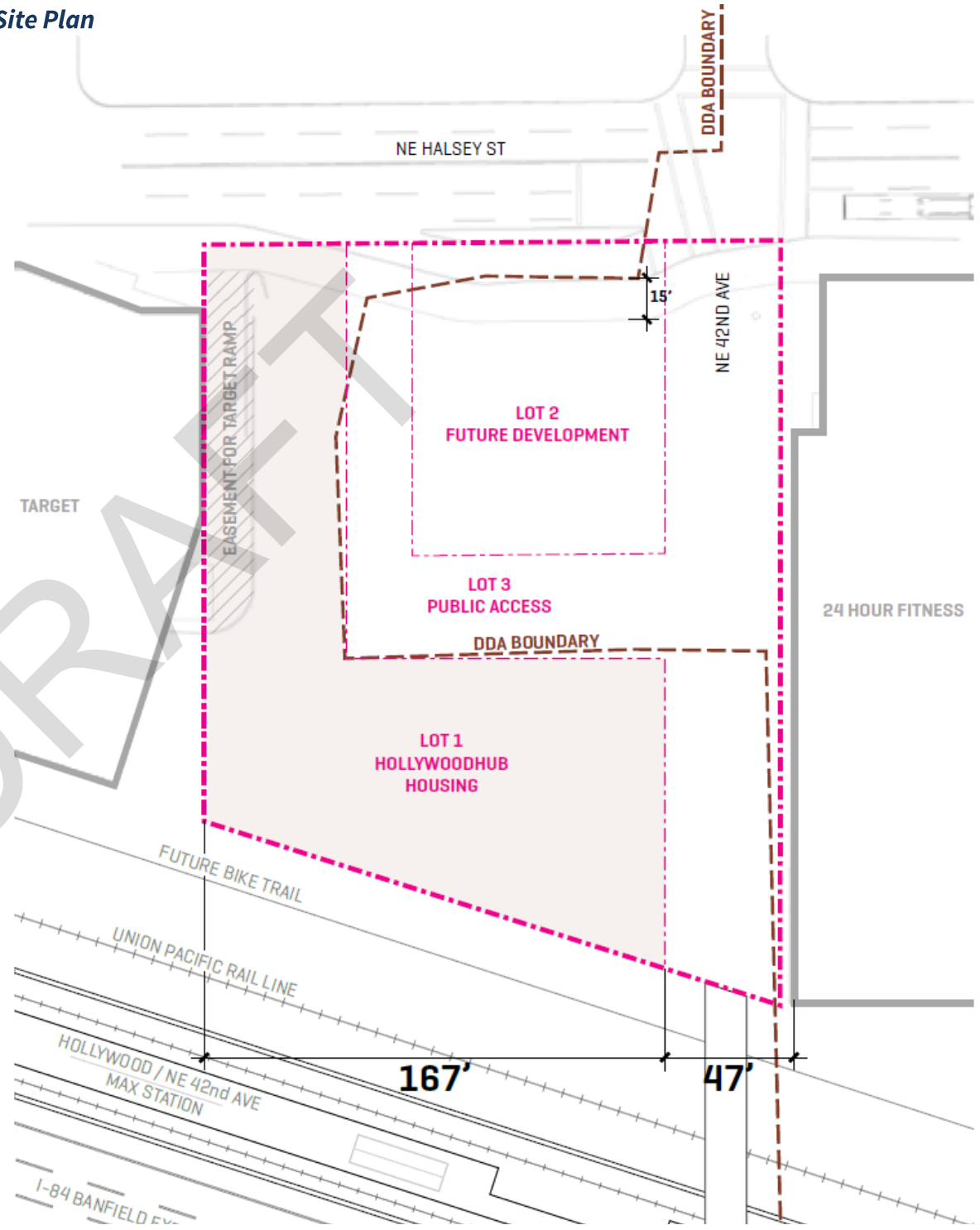
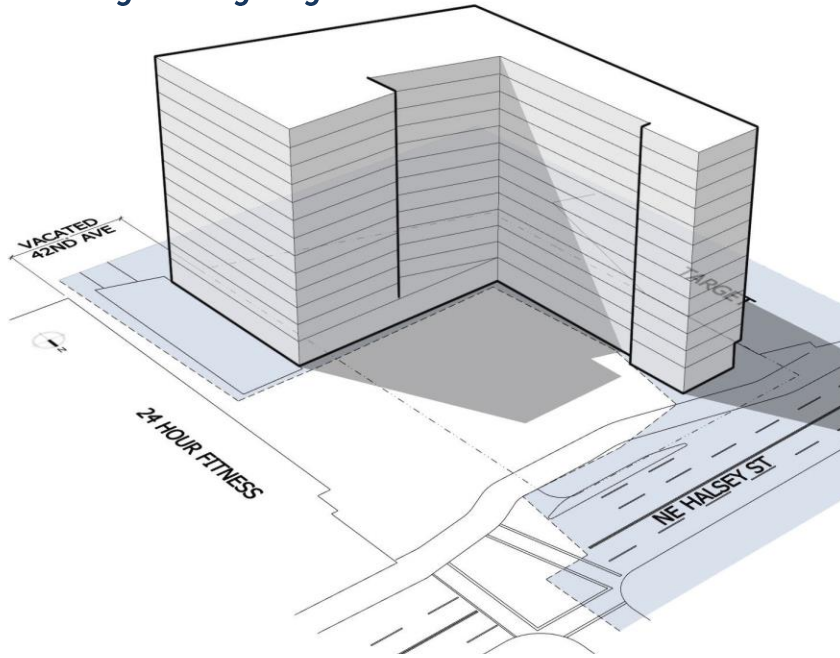
**Hollywood Transit Center**  
4110 NE Halsey Street, Portland OR

# Exhibit B: Previous Site Design (2021)

Resolution 23-07-35

## Site Plan

### Building Massing Diagram



### Public Realm & Infrastructure Improvements



# Exhibit C: Revised Site Design (2023)

Resolution 23-07-35

**Building Massing Diagram**



**Public Realm & Infrastructure Improvements**



**Site Plan**

